



Modular Air, Water, Remote Cooled Nugget Ice Machine

ITEM NO.

NME1850

C.S.I. File No. 11400



The NME1850 represents Scotsman's commitment to R-404A Refrigerant (DuPont SUVA® HP62) as the sensible permanent solution to the refrigerant issue.

LONG SERVICE LIFE

- Evaporator, auger and breaker are all fabricated from durable stainless steel.
- Innovative "Interrupted Flight" auger design minimizes bearing loads.
- New gearmotor design includes heavy duty ball bearings.
- Large spherical top roller bearing self aligns, reducing bearing wear.

ENHANCED RELIABILITY

- Advanced electronics eliminate mechanical switches and sensors.
- Electronic water level control prevents problems associated with water pressure fluctuations.
- Continuous length evaporator refrigerant tubing eliminates potential refrigerant leaks.

IMPROVED EFFICIENCY

- Photoelectric eye bin control allows maximum storage in bin.
- Continuous ice making, no hot gas cycle, no water dump.
- Lower KWH usage per 100 lbs. of ice than cubers.

LOWER SERVICE COSTS

- Most major components are accessible from the machine front. Less repair time equals less repair costs.
- Installation made easy by placing all utility connections on back panel, accepting standard plumbing fittings.
- System design minimizes cost of component failure.

VERSATILITY

- Fits a variety of Scotsman Ice Storage Bins – the modular design allows the user to choose the right bin for their needs.

REMOTE CONDENSER

- Operates in wide outdoor temperature range from -20° to 120°F.

ENVIRONMENTALLY RESPONSIBLE

- HFC R-404A (HP-62) refrigerant.
- Non-CFC foam insulation.

WARRANTY PROTECTION

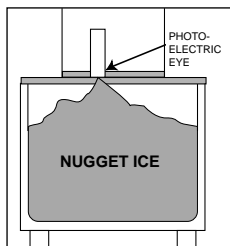
See Dealer for details of Limited Warranty.

- 24 Month Factory Labor.
- 24 Months on all parts.
- 5 Years on Compressor.
- Directory of Certified Dealer Service.



NUGGET ICE

Versatile, inexpensive to produce, used in carbonated beverages and salad bars.



PHOTOELECTRIC EYE

For maximum bin storage, photoelectric eye turns machine off when ice level reaches chute.



TOP BEARING

Extra large top bearing attached to auger and breaker reduces bearing wear.

This product qualifies for the following listings:



SCOTSMAN
Ice Systems The World Relies On.™

Consultant/Contractor Approval

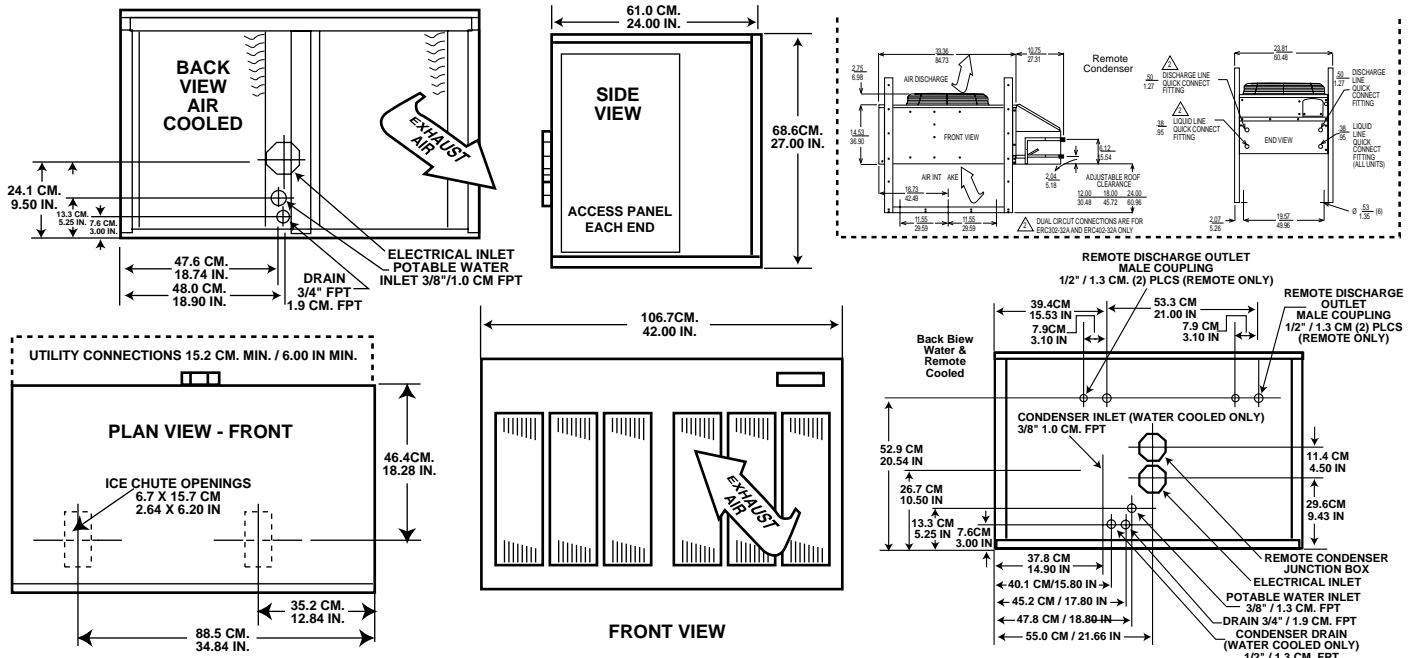
775 CORPORATE WOODS PARKWAY • VERNON HILLS, IL 60061 • (847) 215-4550

FAX (847) 913-9844

E-mail: customer.service@scotsman-ice.com

Printed in U.S.A.
3.5M 10-97

NME1850 MODULAR AIR, WATER, REMOTE COOLED NUGGET ICE MACHINE



INSTALLATION NOTE: Allow 6" minimum space at back for ventilation and utility connections.

All models: Dimensions: W x D x H Unit: 42" x 24" x 27" Shipping Carton: 45 1/2" x 27 1/2" x 32"

Model	Cond. Unit	Ice Prod. Lb./24 hr. 70° Air 90° 50° Water 70°	Finish ***	Ship Wt. lb./kg.	Basic Electrical Volts/Hz/Phase	No. of Wires	Min. Circuit Ampacity†	Max. Fuse Size or HACR Circuit Breaker	Power KWH/100 lbs. 90°/70° 70°/50°F	Water Usage Gallons/100 lbs. Potable 90°/70° 70°/50°F Condenser 90°/70° 70°/50°F
NME1850AE-32A	Air	2130 1595	EG	395/180	208-230/60/1	2	20.6	25	3.94 2.90	12 12 — —
NME1850AE-3A	Air	2130 1595	EG	395/180	208-230/60/3	3	14.9	20	3.63 2.54	12 12 — —
NME1850WE-3A	Water	2185 1825	EG	390/178	208-230/60/3	3	13.8	20	2.65 2.12	12 12 80 41
NME1850RE-3A	Remote	2400* 1800**	EG	425/194	208-230/60/3	3	17.4	25	3.57 2.37	12 12 — —
NME1850RE-32A	Remote	2400* 1800**	EG	425/194	208-230/60/1	2	23.1	30	3.87 2.71	12 12 — —

REMOTE CONDENSERS - Dimensions: W x D x H Unit: 45" x 22.12" x 29.25" Shipping Carton: 46.88" x 21.75" x 22.50"

ERC302-32A	Air	—	Galv.	110/50	208-230/60/1	2	2.6†	15	—	—	—	—	1-NME1850R
------------	-----	---	-------	--------	--------------	---	------	----	---	---	---	---	------------

*** (EG) Grey, leathergrain embossed steel with high gloss baked enamel finish.
 † Use this value to determine minimum wire size as per National Electric Code Standards.
 ‡ Use value for remote condenser to determine wire size between icemaker and fan motor.
 * At 0° condenser temperature, 70° air temperature, 55° water temperature.
 ** At 90° condenser temperature, 90° air temperature, 70° water temperature.

TYPICAL ICE MAKING CAPACITY PER 24 HOURS

AIR TEMPERATURE	NME1850AE AIR-COOLED WATER TEMPERATURE				lb. / kg.
	50° 10°	70° 21°	90° 32°	90° 32°	
70° 21°	2130 966	1815 823	1580 717	1580 717	lb. / kg.
90° 32°	1865 846	1595 723	1425 646	1425 646	lb. / kg.
100° 38°	1780 807	1510 685	1350 612	1350 612	lb. / kg.

AIR TEMPERATURE	NME1850WE WATER-COOLED WATER TEMPERATURE				lb. / kg.
	50° 10°	70° 21°	90° 32°	90° 32°	
70° 21°	2185 991	1885 855	1640 744	1640 744	lb. / kg.
90° 32°	2130 966	1825 828	1600 726	1600 726	lb. / kg.
100° 38°	2060 934	1760 798	1550 703	1550 703	lb. / kg.

Capacities represent typical production, variances of ±5% are normal.

NME1850R REMOTE COOLED

	AMBIENT TEMPERATURE			ICE PRODUCTION
	COND. AIR	INDOOR	WATER	
LOW TEMPERATURE	F°	0	70	2400 LB.
	C°	-17.8	21.1	1083 KG.
NORMAL TEMPERATURE	F°	90	90	1800 LB.
	C°	32.2	32.2	812 KG.
HIGH TEMPERATURE	F°	110	90	1600 LB.
	C°	49.3	32.2	722 KG.

OPTIONAL PRE-CHARGED REFRIGERANT TUBE KITS:
RTE25: 25 foot pre-charged tubing with connectors — R-404A (HP62).
RTE40: 40 foot pre-charged tubing with connectors — R-404A (HP62).
OPTIONAL STORAGE BINS: BH800, BH900 with KBT14A bin top, and B90 and extension with KBT18 bin top.
OPTIONAL STAINLESS STEEL PANEL KIT: SPKFM42: Contains top, front, two end and service panels. Not factory installed.

IMPORTANT OPERATING REQUIREMENTS:
 Machine requires voltage indicated on rating name plate. Failures caused by improper voltage are not considered factory defects.

Scotsman's products are not designed for outdoor installations nor for installation where air temperatures fall below 50° F, or exceed 100° F; nor where water temperatures fall below 40° F, or exceed 100° F. Extended periods of operation at temperatures exceeding these limitations constitutes misuse under the terms of Scotsman Manufacturer's Limited Warranty, resulting in a loss of warranty coverage.

NME SERIES NUGGET ICEMAKER

Model _____ nugget icemaker manufactured by Scotsman Ice Systems. Production capacity to be _____ at 90°F air temperature and 70°F water temperature. Icemaker to have a _____ (air, water, remote air)-cooled condenser. To have factory installed photo-electric eye bin level control to automatically start and stop icemaker. Evaporator and auger to be constructed of stainless steel. Exterior cabinet to be _____ (baked enamel grey leathergrain or 304 series stainless steel) finish. Icemaker to be UL, CUL, NSF and USDA listed.

We reserve the right to make product improvements at any time. Specifications and design are subject to change without notice. Scotsman ice systems include a full line of ice shapes, modular and self-storing cubers, flakers, drink dispensers, bins and accessories.

